



**UET Mixers**  
 26 Maple St.  
 Mechanic Falls, ME 04256  
 Tel: (207)-345-3330  
 Toll Free: (888)-838-9131  
 Fax: (603)-627-9328

**XCEL-3 to 10**

**TABLE OF CONTENTS**

-

**TABLE OF CONTENTS**

Bulletin 01-050 (Recommended bolting torques).....Pg.1

Bulletin 02-150 (Installation of Mixer Drive Size 3 to 10).....Pg. 2

Bulletin 04-150 (Maintenance of Mixer Drive Size 3 to 10).....Pg. 5

Bulletin 05-150 (Lubrication of Mixer Drive Sizes 3 to 10).....Pg. 6

Bulletin 05-155 (Lubrication of Mixer Drive Sizes 3 to 10 Grease Lube Only).....Pg. 7

Bulletin 07-150 (Mixer Drive Parts Guide for Size 3 to 7).....Pg. 8

Bulletin 07-151 (Mixer Drive Parts Guide for Size 8 to 10).....Pg. 9











## Maintenance of Mixer Drive Size 3 to 10

1. Your UET XCEL Mixer is a completely sealed gearbox with breathing mechanism. No venting is required!!!

Sizes 3-6 have the breathing mechanism located opposite the high speed end of the gearbox.

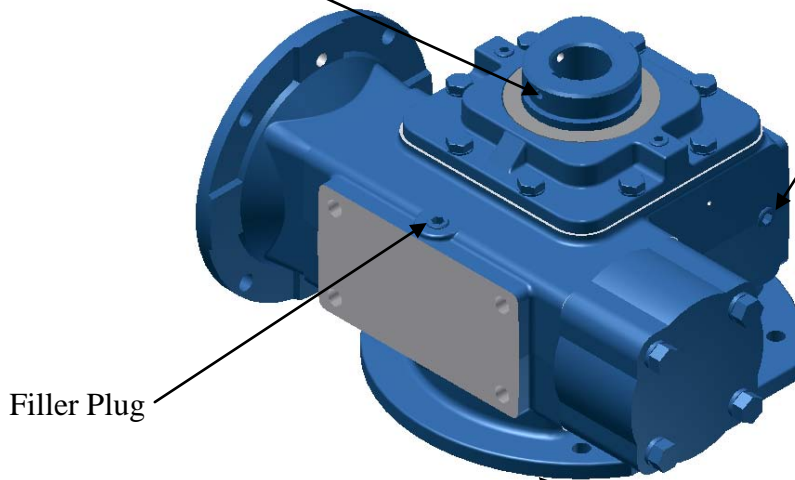
Sizes 8-10 have a separate breathing canister which is shipped loose. Remove the temporary pipe plug (see diagram below) and install the breathing cannister.

2. Refer to Figure 1 below. This shows recommended fill level for lubricant. Remove plug and check oil level.
3. For proper maintenance of new units, drain oil while warm after 1500 hours of operation. Add new oil to the recommended level.

**RECOMMENDED OIL LEVELS AND CHANGES:** Oil should be changed every 5,000 hours of operation, at the very least, with more frequent changes if operating in harsh environment, moisture condensation is detected in the oil or a sludge build-up is noted inside the housing.

### Plug and Drain locations

Grease Fitting  
*(Not all models apply)*



Because of the varying oil quantities, the normal level plugs are not appropriate for monitoring oil levels

Filler Plug

Figure 1

Drain Plug  
*Inside base flange*



Lubrication of Mixer Drive Sizes 3-10

1. Unit Lubrication

Oil Properties	
AGMA Viscosity Grade	4
ISO Viscosity Grade	150
Viscosity at SSU 104°F Cst	626-765 135-165
Manufacturer	Lubricant
Mobil Oil Corp. Or Equal	SHC629

Lubricating Oils NOT Recommended—Ordinary motor oil (regardless of stated viscosity), automotive rear end oils, and EP lubricants that contain sulphur, chlorine, or phosphorus compounds (such compounds are extremely corrosive to bronze)

2. Unit Oil Change

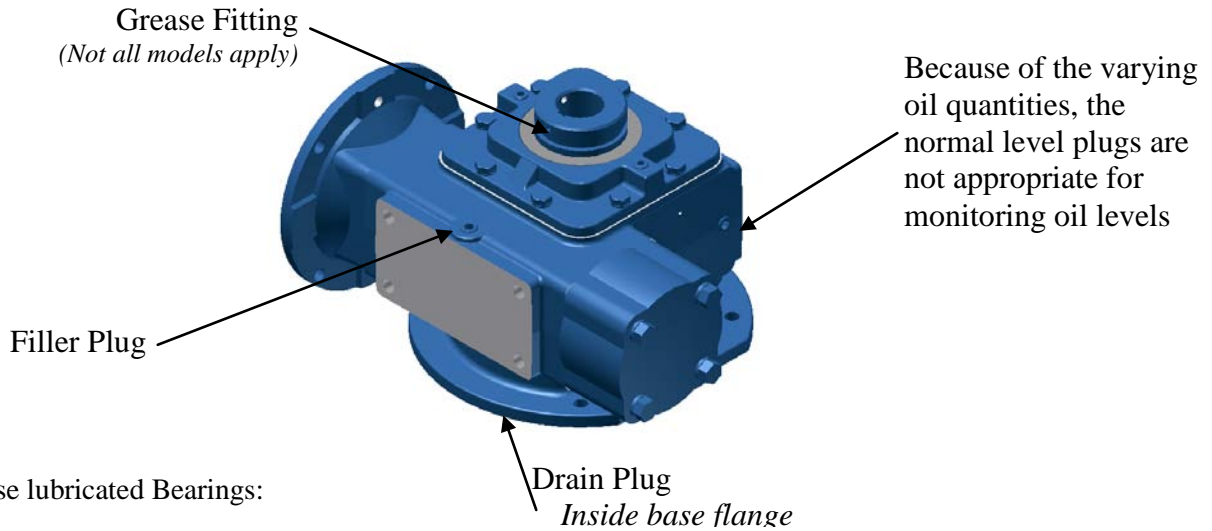
Operational Oil Temperatures\*

Mixer gear reducers in normal operation can generate temperatures up to 200°F depending on the type of reducer and the severity of the application (loading, duration of service, ambient temperature). Oil temperatures in excess of 200°F may be the signal of a problem. **⚠ CAUTION! For personal protection, be sure oil has cooled to a safe temperature before performing maintenance.**

Mixer Size	Mixer Oil Capacities	
	Oil Qty (Milliliters)	Oil Qty (ounces)
3	560	18.9
4	1450	49
5	1770	59.8
6	2525	85.3
7	3540	119.6
8	3786	128
9	8517	288
10	12303	416

1ml = .061in<sup>3</sup>/.0019 pts/.0338 fl oz.

*The table above shows that the correct oil amount will not allow any measureable pressure build-up to occur on units equipped with S-EQUALIZER*



3. Grease lubricated Bearings:

Recommended Lubrication for Bearings—NOTE not all models apply\* Bearings that are not adequately lubricated by the splash system will have grease fittings. Fiber grease with a work penetration of 310 to 340 at 77°F, and an ASTM point of 350°F, minimum should be used to pressure lubricate the bearings.



Lubrication of Mixer Drive Sizes 3-10 (*Grease Lube Only*)

1. Unit Lubrication

Grease Properties	
<b>NLGL Number</b>	1 (Min.)
Penetration Unworked	326
Viscosity at 104°F Cst	125
<b>Manufacturer:</b>	<b>Lubricant:</b>
American Lubricants, Inc.	Semi-Synthetic Lithium Complex

Mixer Size	Mixer Oil Capacities	
	Grease Qty (Milliliters)	Grease Qty (ounces)
3	560	18.9
4	1450	49
5	1770	59.8
6	2525	85.3
7	3540	119.6
8	3786	128
9	8517	288
10	12303	416

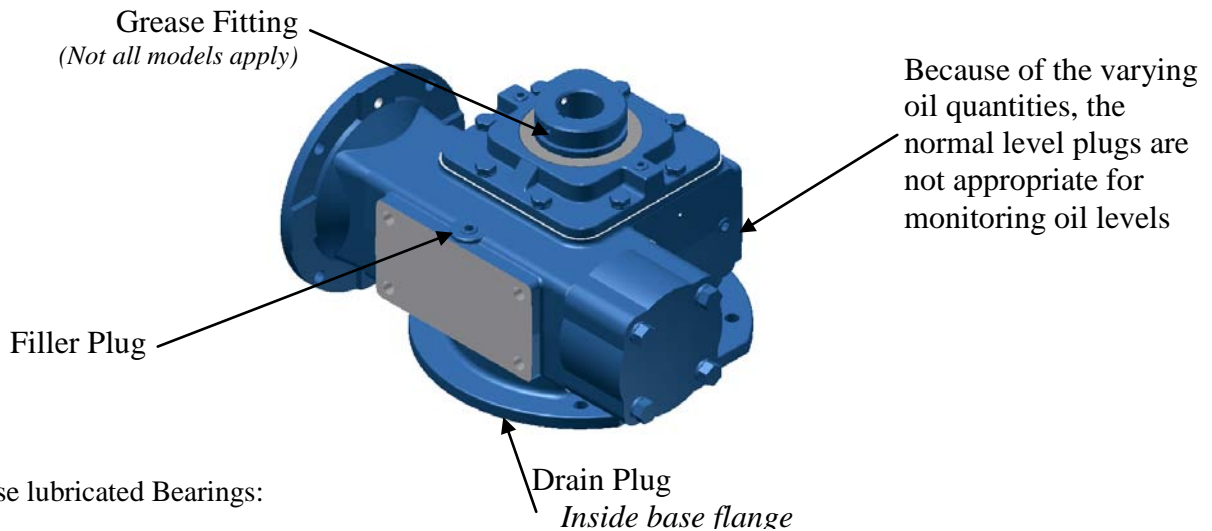
Lubricating Greases **NOT** Recommended—Ordinary grease (regardless of stated viscosity) and EP lubricants that contain sulphur, chlorine, or phosphorus compounds (such compounds are extremely corrosive to bronze)

*These are approximates. Always fill units to fill line*

2. Unit Oil Change

Operational Oil Temperatures\*

Mixer gear reducers in normal operation can generate temperatures up to 200°F depending on the type of reducer and the severity of the application (loading, duration of service, ambient temperature). Oil temperatures in excess of 200°F may be the signal of a problem. **⚠ CAUTION! For personal protection, be sure oil has cooled to a safe temperature before performing maintenance.**



3. Grease lubricated Bearings:

Recommended Lubrication for Bearings—NOTE not all models apply\* Bearings that are not adequately lubricated by the splash system will have grease fittings. Fiber grease with a work penetration of 310 to 340 at 77°F, and an ASTM point of 350°F, minimum should be used to pressure lubricate the bearings.





**UET Mixers**  
 26 Maple St.  
 Mechanic Falls, ME 04256  
 Tel: (207)-345-3330  
 Toll Free: (888)-838-9131  
 Fax: (603)-627-9328

**XCEL-3 to 10**

**Bulletin 07-150**  
 1/12/12  
 Supersedes 01/24/05

Page  
 01 of 01

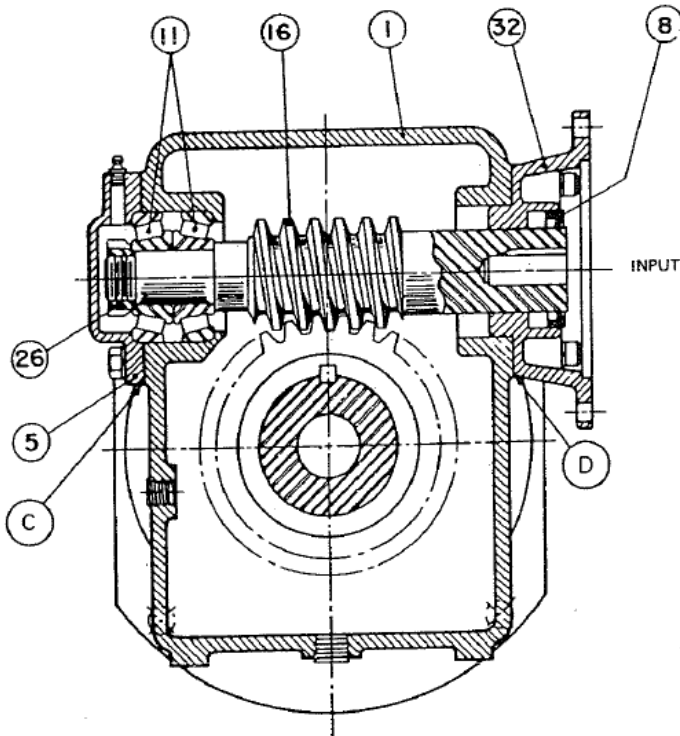
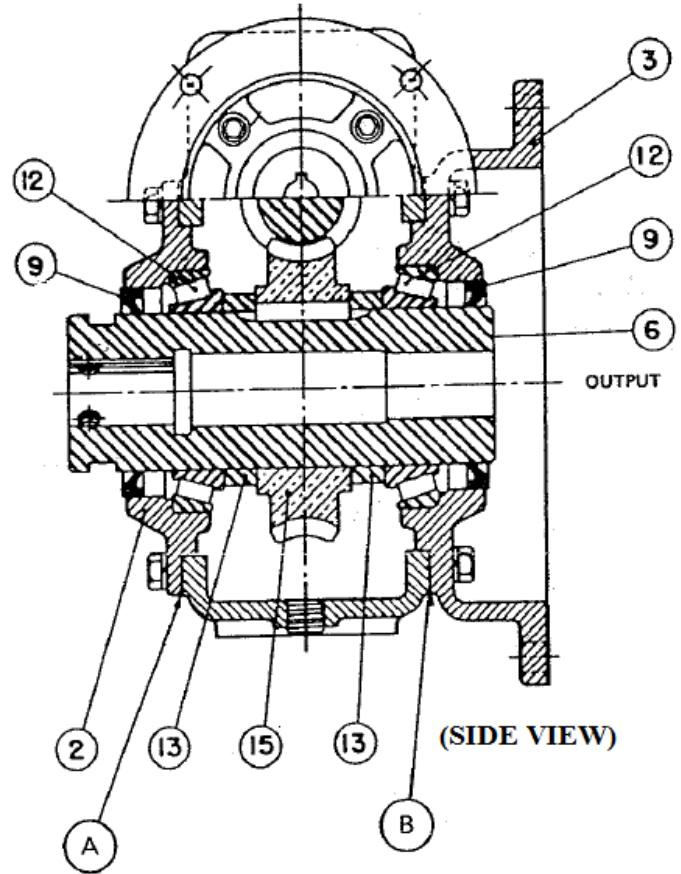
## Mixer Drive Parts Guide For Sizes 3-7

### 1. Preventative Maintenance Parts Kit No. 200

Item #	Description	Quantity
08	High Speed Seal	1
09	Slow Speed Seal	4

### 2. Major Overhaul Parts Kit No. 210

Item #	Description	Quantity
08	High Speed Seal	1
09	Slow Speed Seal	4
11	High Speed Bearing	1
12	Slow Speed Bearing	2
15	Slow Speed Gear	1
16	High Speed Worm </td <td>1</td>	1
33	Gasket/Shim Pack	1



Note:

Locations "A & B" indicate shim position for low speed shaft adjustment

Location "C" indicates shim position for high speed shaft adjustment

Location "D" uses gasket for sealing only and will not adjust shaft end play. (Ref: Item 33 Parts List.)

#### NOTES:

1. Specify Model, Serial No., and Ration when ordering any of the above parts
2. Consult factory for Current Pricing & Availability



**UET Mixers**  
 26 Maple St.  
 Mechanic Falls, ME 04256  
 Tel: (207)-345-3330  
 Toll Free: (888)-838-9131  
 Fax: (603)-627-9328

**XCEL-3 to 10**

**Bulletin 07-151**  
 1/12/12  
 Supersedes 11-30-98

Page  
 01 of 01

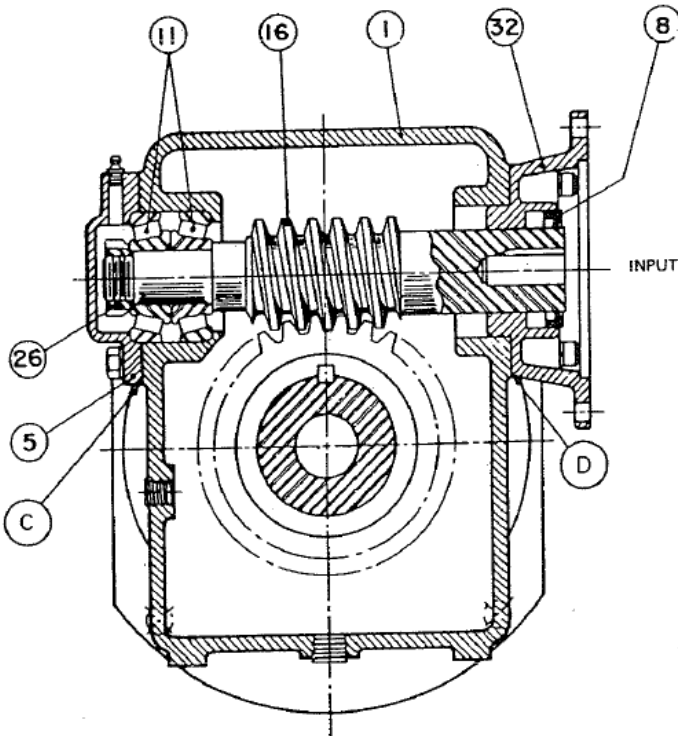
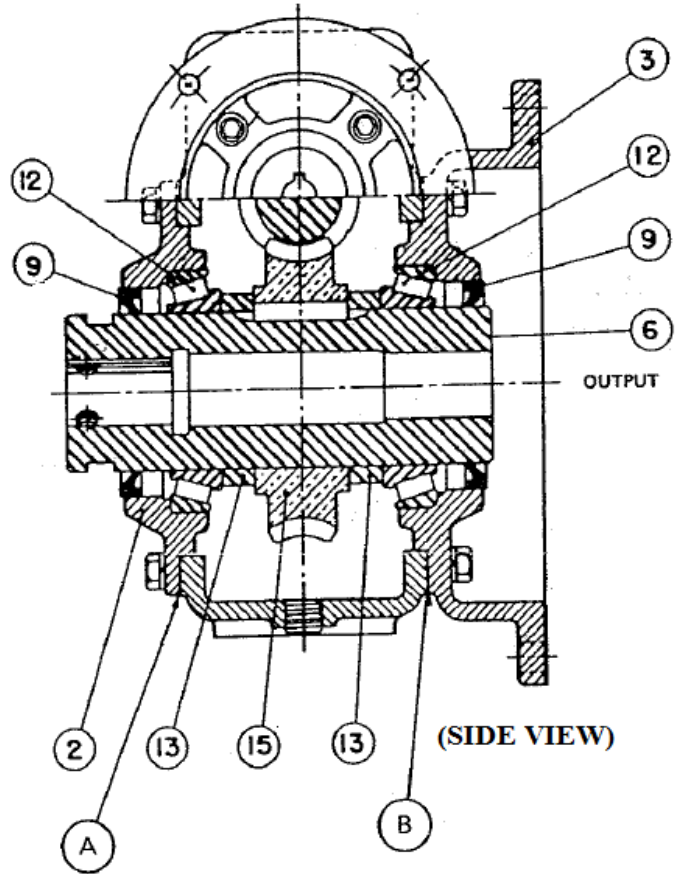
## Mixer Drive Parts Guide For Sizes 8-10

### 1. Preventative Maintenance Parts Kit No. 200

Item #	Description	Quantity
08	High Speed Seal	1
09	Slow Speed Seal	4

### 2. Major Overhaul Parts Kit No. 210

Item #	Description	Quantity
08	High Speed Seal	1
09	Slow Speed Seal	4
11	High Speed Bearing	2
12	Slow Speed Bearing	2
15	Slow Speed Gear	1
16	High Speed Worm	1
33	Gasket/Shim Pack	1



Note:

Locations "A & B" indicate shim position for low speed shaft adjustment

Location "C" indicates shim position for high speed shaft adjustment

Location "D" uses gasket for sealing only and will not adjust shaft end play. (Ref: Item 33 Parts List.)

#### NOTES:

1. Specify Model, Serial No., and Ration when ordering any of the above parts
2. Consult factory for Current Pricing & Availability